



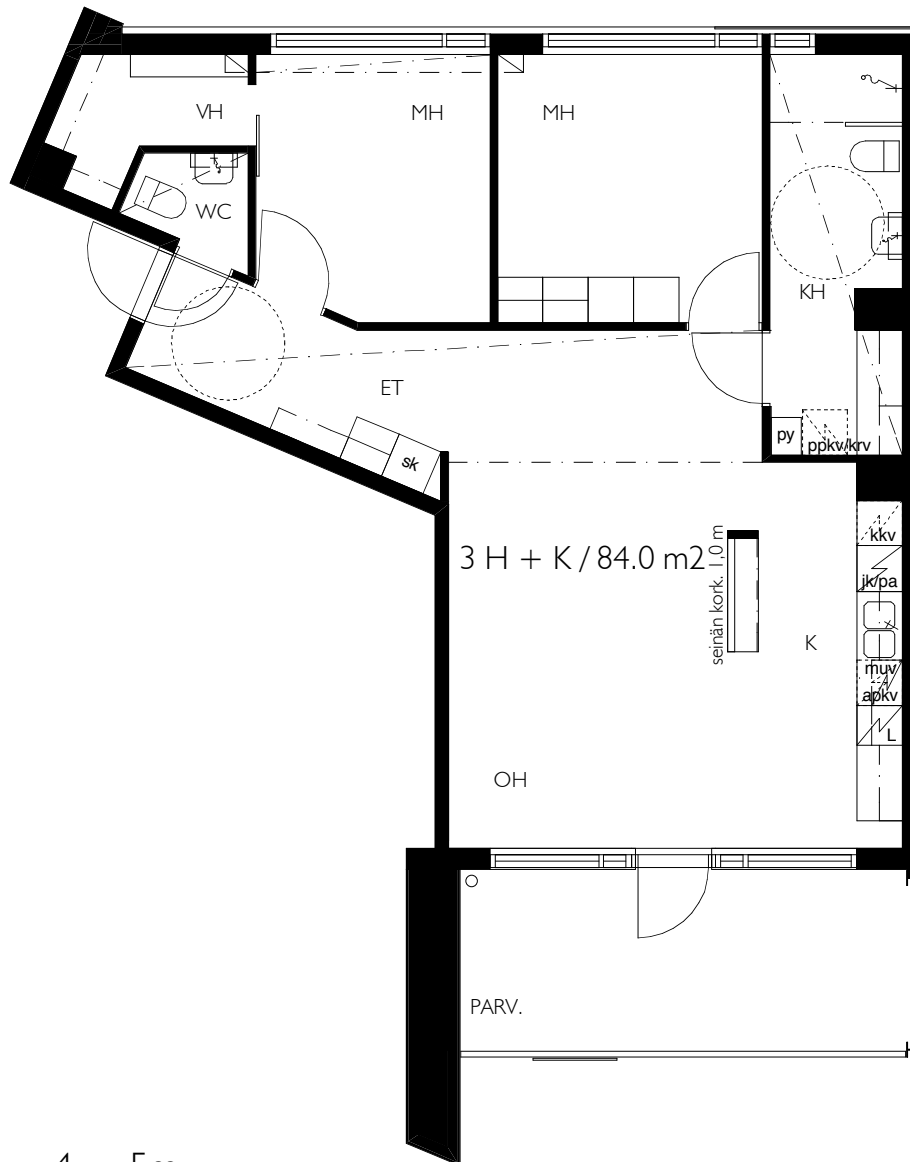
alustava

29.05.2008

# KUMPULAN KIINTEISTÖT OY / MUOTOILIJANPIIHA

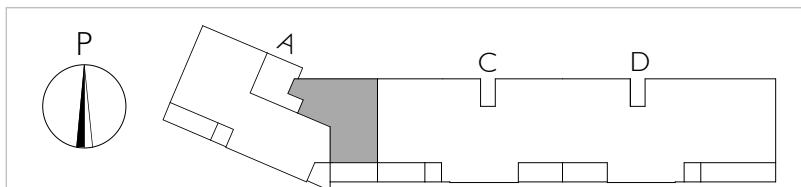
3 H + K, parveke / 84,0 m<sup>2</sup>

asunto: **1,**



0 1 2 3 4 5m

- KALEVANKATU 18
- KALEVAGATAN 18
- SISÄPIIHA / GÅRDEN
- 00100 HELSINKI
- PUH 020 757 9911
- FAX 020 757 9912
- ark@stefanahlman.fi
- www.stefanahlman.fi





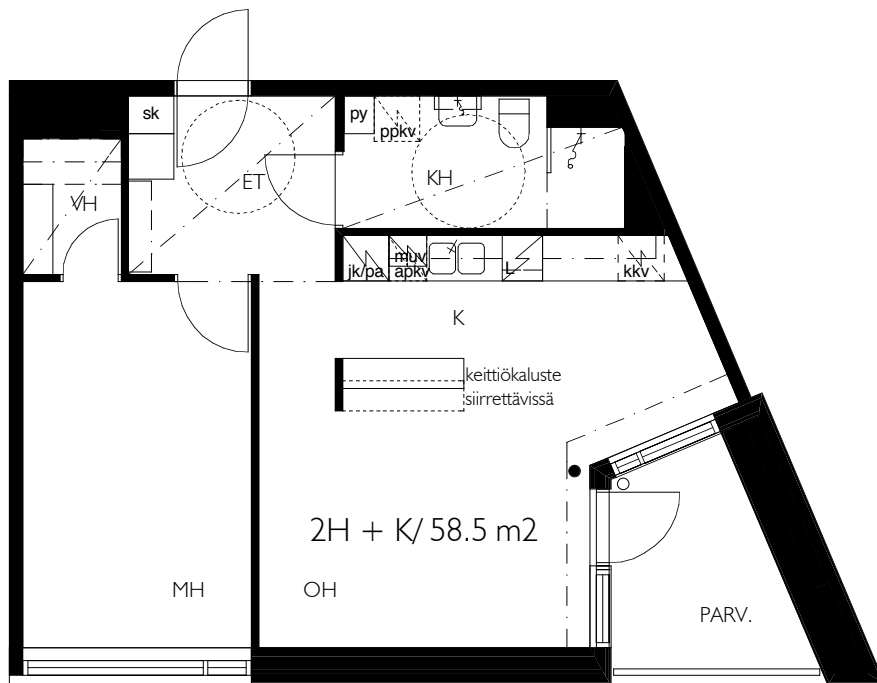
alustava

29.05.2008

# KUMPULAN KIINTEISTÖT OY / MUOTOILIJANPIIHA

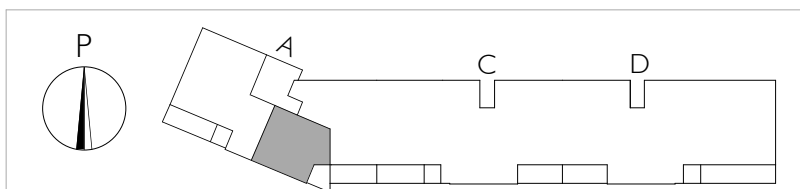
2 H + K, parveke / 58,5 m<sup>2</sup>

asunto: 2, 6, 10, 14, 17



0 1 2 3 4 5m

- KALEVANKATU 18
- KALEVAGATAN 18
- SISÄPIIHA / GÅRDEN
- 00100 HELSINKI
- PUH 020 757 9911
- FAX 020 757 9912
- ark@stefanahlman.fi
- www.stefanahlman.fi





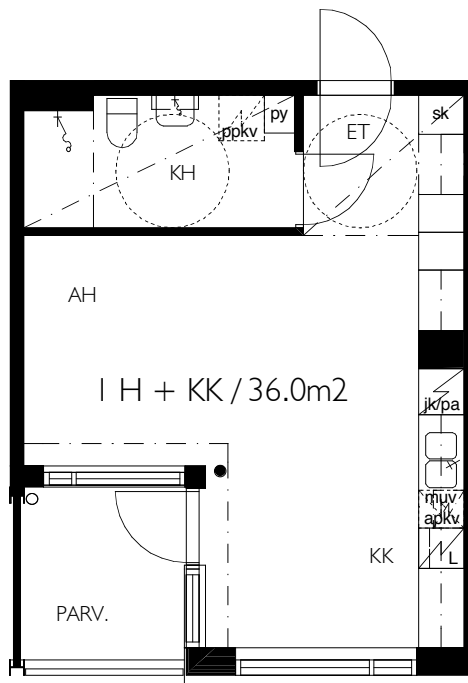
alustava

29.05.2008

# KUMPULAN KIINTEISTÖT OY / MUOTOILIJANPIHA

I H + KK, parveke / 36,0 m<sup>2</sup>

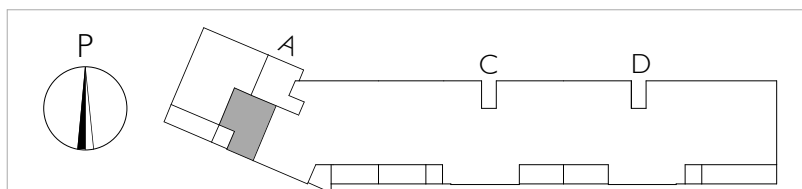
asunto: **3,**



parvekekaiteen alaosa  
umpinainen korkeuteen 0,4m

0 1 2 3 4 5m

- KALEVANKATU 18
- KALEVAGATAN 18
- SISÄPIHA / GÅRDEN
- 00100 HELSINKI
- PUH 020 757 9911
- FAX 020 757 9912
- ark@stefanahlman.fi
- www.stefanahlman.fi





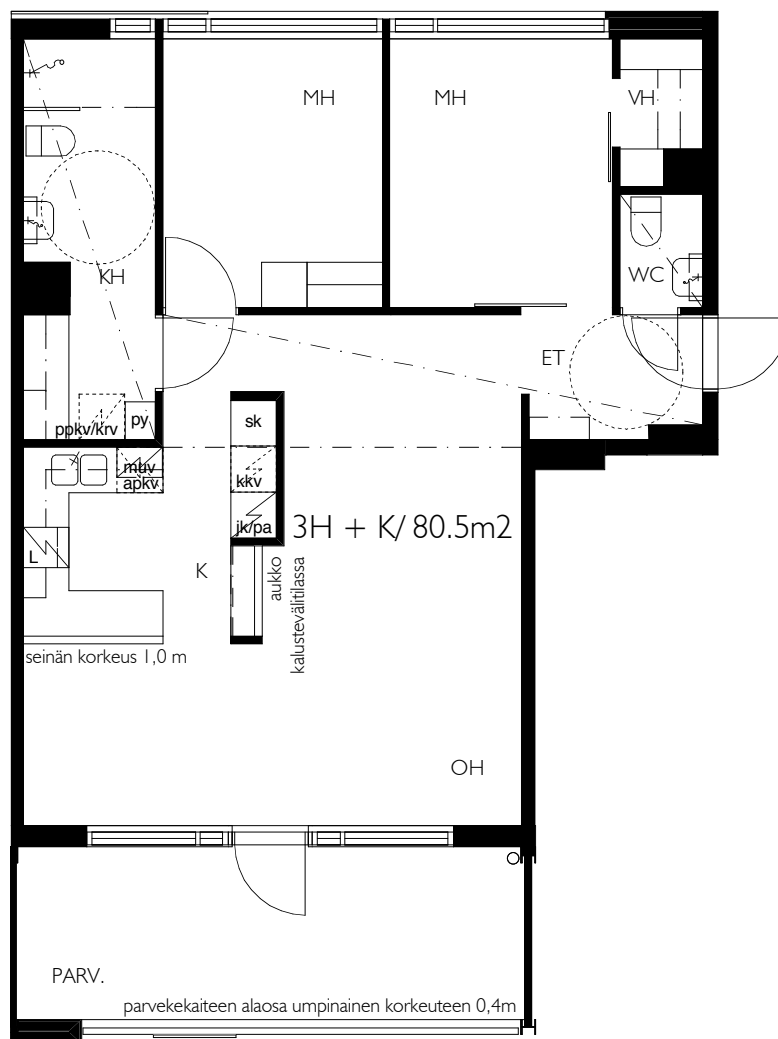
alustava

29.05.2008

# KUMPULAN KIINTEISTÖT OY / MUOTOILIJANPIIHA

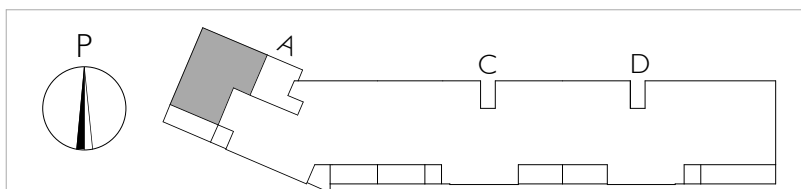
3 H + K, parveke / 80.5 m<sup>2</sup>

asunto: 4,



0 1 2 3 4 5m

- KALEVANKATU 18
- KALEVAGATAN 18
- SISÄPIIHA / GÅRDEN
- 00100 HELSINKI
- PUH 020 757 9911
- FAX 020 757 9912
- ark@stefanahlman.fi
- www.stefanahlman.fi





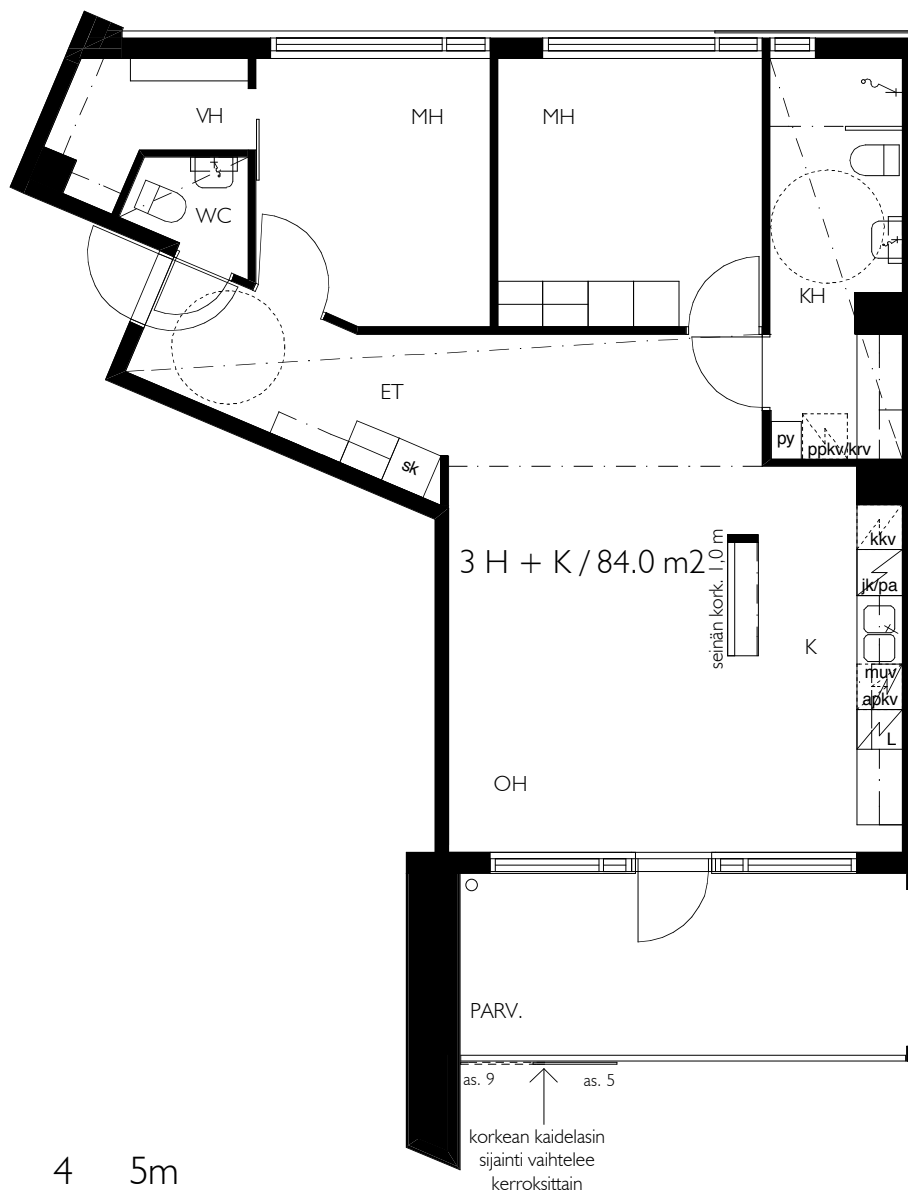
alustava

29.05.2008

# KUMPULAN KIINTEISTÖT OY / MUOTOILIJANPIIHA

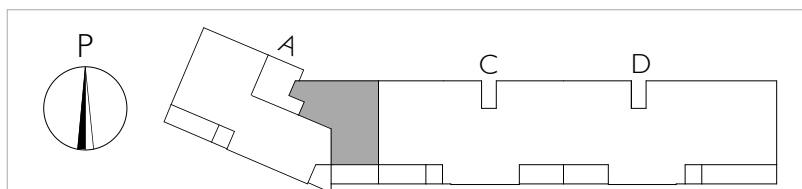
3 H + K, parveke / 84,0 m<sup>2</sup>

asunto: 5, 9



0 1 2 3 4 5m

- KALEVANKATU 18
- KALEVAGATAN 18
- SISÄPIIHA / GÅRDEN
- 00100 HELSINKI
- PUH 020 757 9911
- FAX 020 757 9912
- ark@stefanahlman.fi
- www.stefanahlman.fi





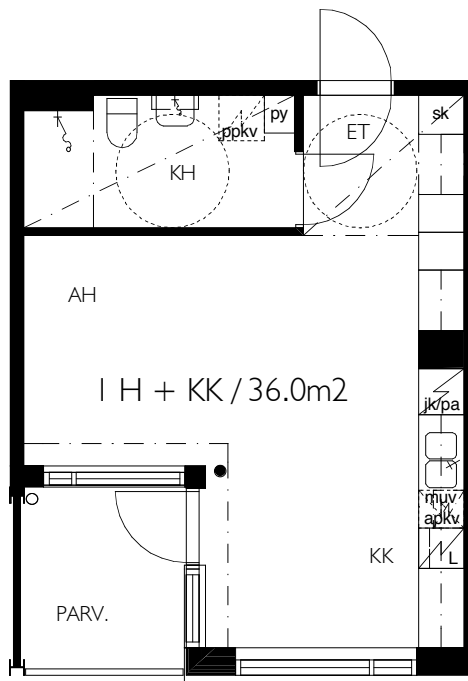
alustava

29.05.2008

# KUMPULAN KIINTEISTÖT OY / MUOTOILIJANPIIHA

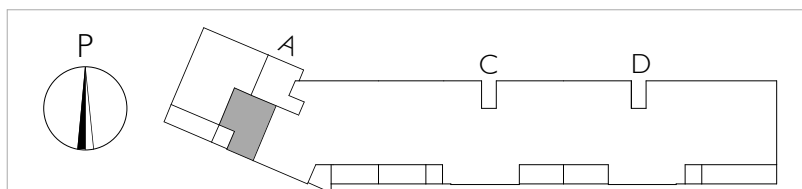
I H + KK, parveke / 36,0 m<sup>2</sup>

asunto: 7, 11, 15



0 1 2 3 4 5m

- KALEVANKATU 18
- KALEVAGATAN 18
- SISÄPIIHA / GÅRDEN
- 00100 HELSINKI
- PUH 020 757 9911
- FAX 020 757 9912
- ark@stefanahlman.fi
- www.stefanahlman.fi





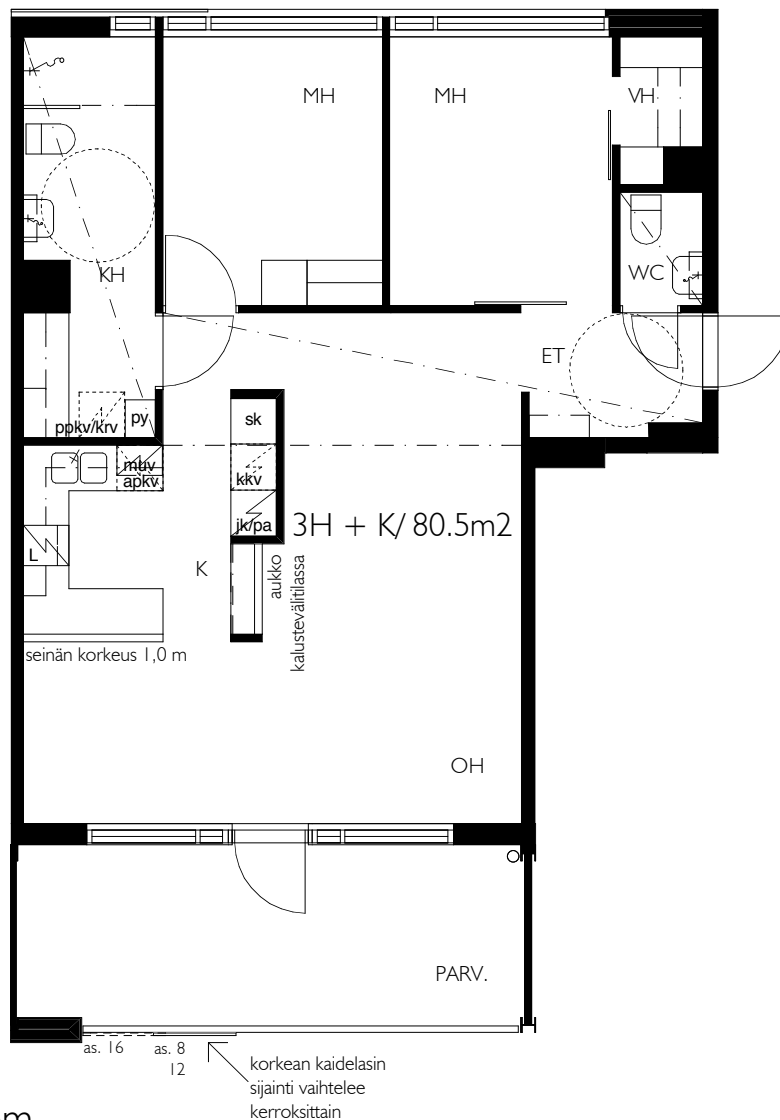
alustava

29.05.2008

# KUMPULAN KIINTEISTÖT OY / MUOTOILIJANPIIHA

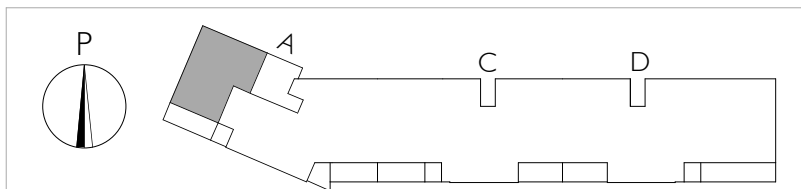
3 H + K, parveke / 80.5 m<sup>2</sup>

asunto: **8, 12, 16**



0 1 2 3 4 5m

- KALEVANKATU 18
- KALEVAGATAN 18
- SISÄPIIHA / GÅRDEN
- 00100 HELSINKI
- PUH 020 757 9911
- FAX 020 757 9912
- ark@stefanahlman.fi
- www.stefanahlman.fi





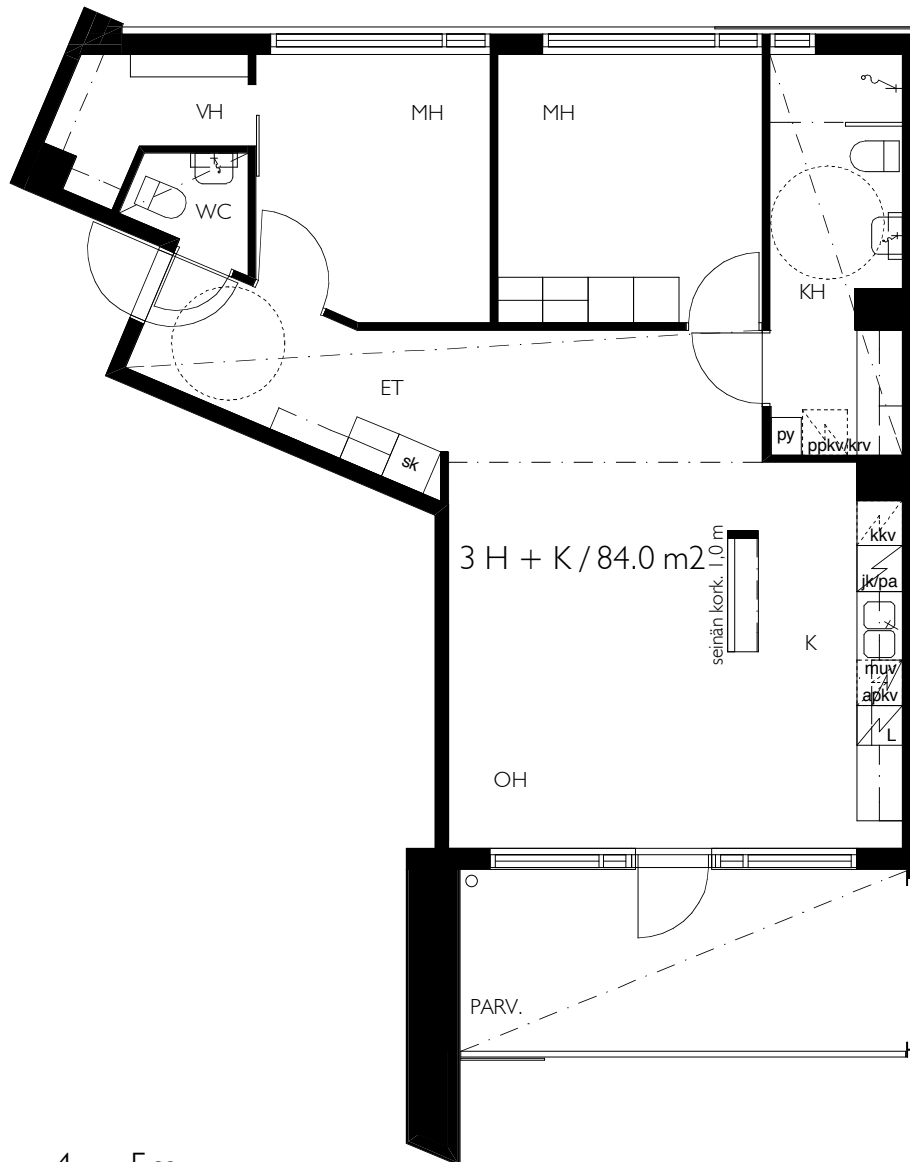
alustava

29.05.2008

# KUMPULAN KIINTEISTÖT OY / MUOTOILIJANPIIHA

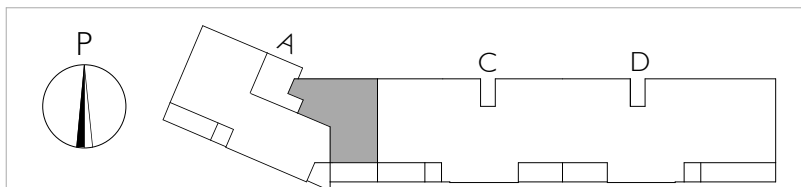
3 H + K, parveke / 84,0 m<sup>2</sup>

asunto: **13**



0 1 2 3 4 5m

- KALEVANKATU 18
- KALEVAGATAN 18
- SISÄPIIHA / GÅRDEN
- 00100 HELSINKI
- PUH 020 757 9911
- FAX 020 757 9912
- ark@stefanahlman.fi
- www.stefanahlman.fi







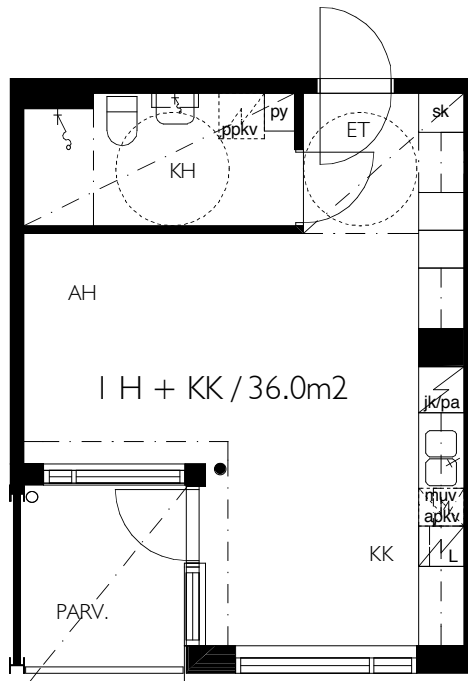
alustava

29.05.2008

# KUMPULAN KIINTEISTÖT OY / MUOTOILIJANPIIHA

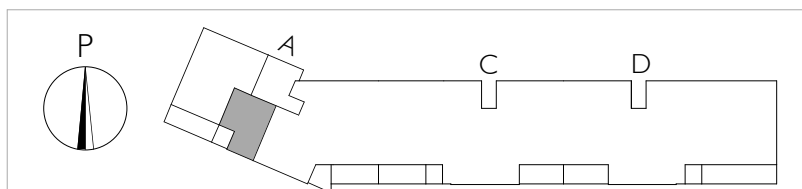
I H + KK, parveke / 36,0 m<sup>2</sup>

asunto: **18**



0 1 2 3 4 5m

- KALEVANKATU 18
- KALEVAGATAN 18
- SISÄPIIHA / GÅRDEN
- 00100 HELSINKI
- PUH 020 757 9911
- FAX 020 757 9912
- ark@stefanahlman.fi
- www.stefanahlman.fi





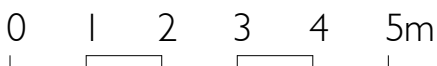
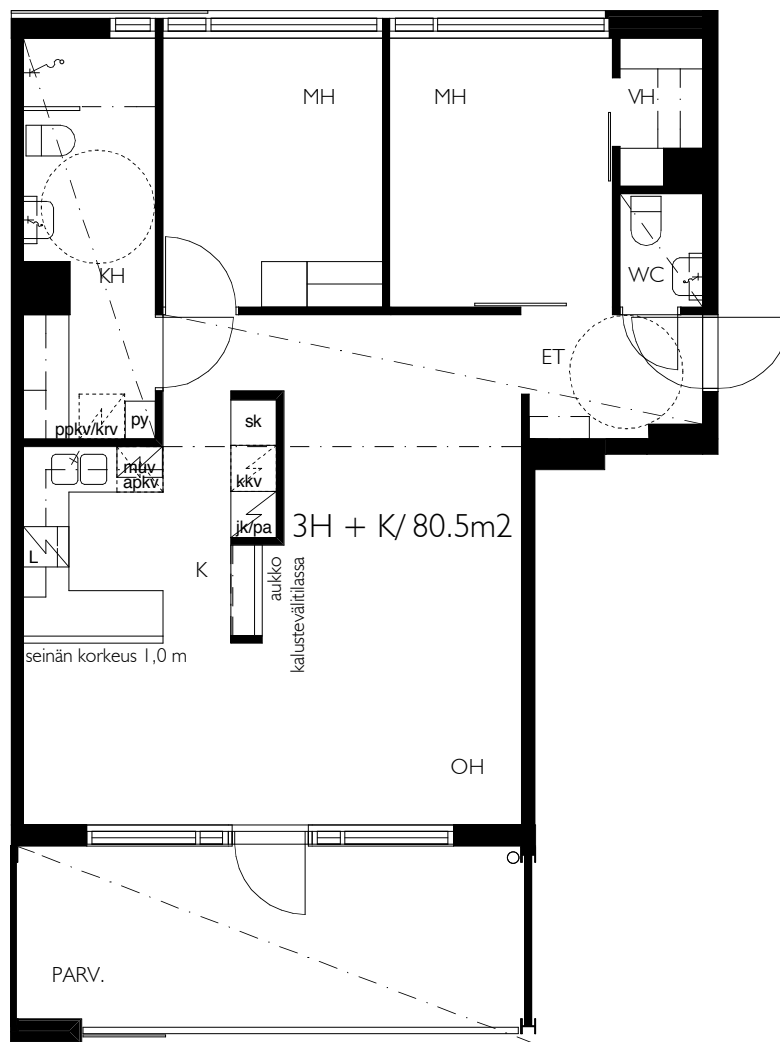
alustava

29.05.2008

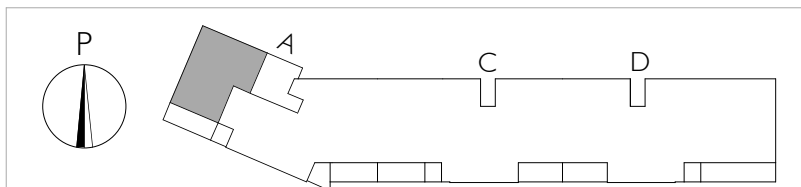
# KUMPULAN KIINTEISTÖT OY / MUOTOILIJANPIIHA

3 H + K, parveke / 80.5 m<sup>2</sup>

asunto: **19**



- KALEVANKATU 18
- KALEVAGATAN 18
- SISÄPIIHA / GÅRDEN
- 00100 HELSINKI
- PUH 020 757 9911
- FAX 020 757 9912
- ark@stefanahlman.fi
- www.stefanahlman.fi





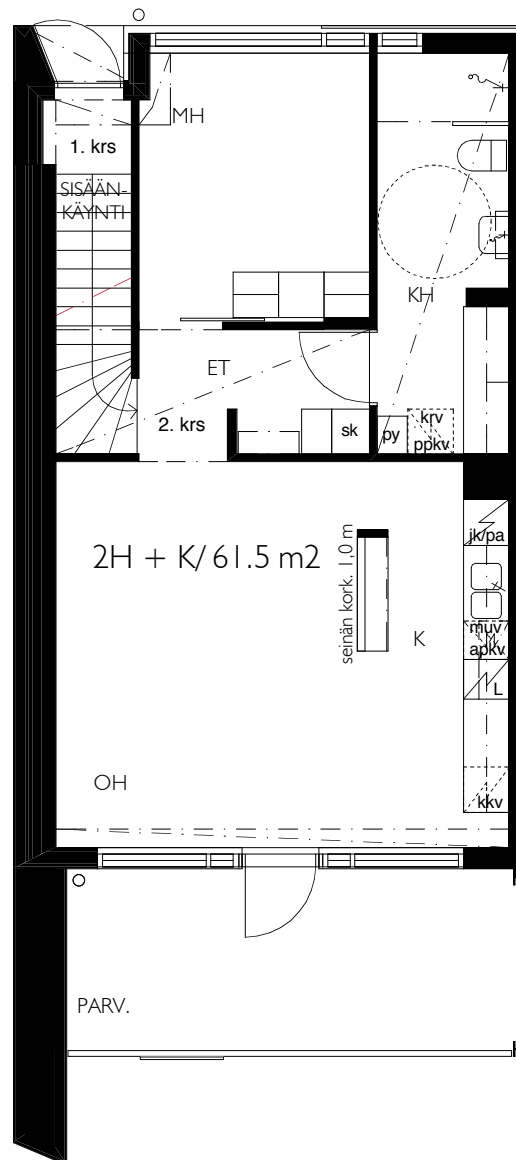
alustava

29.05.2008

# KUMPULAN KIINTEISTÖT OY / MUOTOILIJANPIIHA

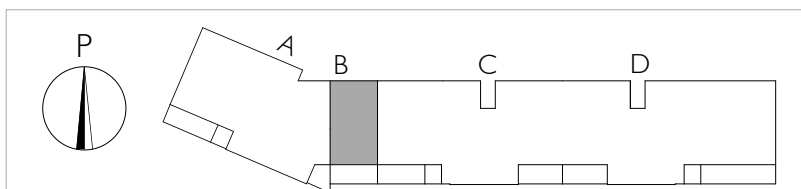
2 H + K, parveke / 61.5 m<sup>2</sup>

asunto: 20



0 1 2 3 4 5m

- KALEVANKATU 18
- KALEVAGATAN 18
- SISÄPIIHA / GÅRDEN
- 00100 HELSINKI
- PUH 020 757 9911
- FAX 020 757 9912
- ark@stefanahlman.fi
- www.stefanahlman.fi





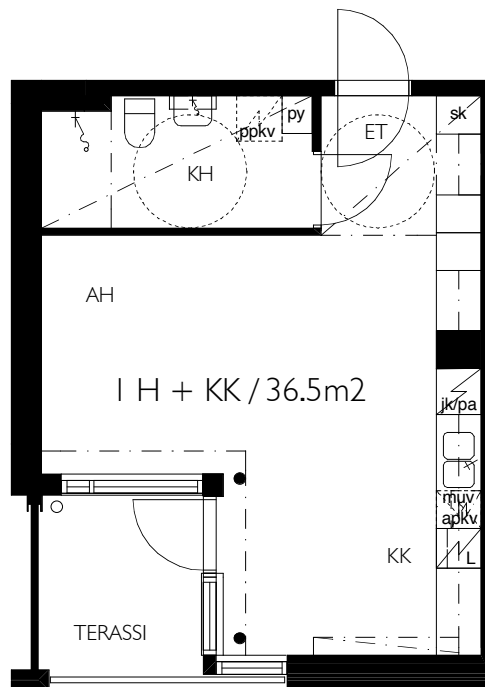
alustava

29.05.2008

# KUMPULAN KIINTEISTÖT OY / MUOTOILIJANPIIHA

I H + KK, terassi / 36.5 m<sup>2</sup>

asunto: **21**



0 1 2 3 4 5m

- KALEVANKATU 18
- KALEVAGATAN 18
- SISÄPIIHA / GÅRDEN
- 00100 HELSINKI
- PUH 020 757 9911
- FAX 020 757 9912
- ark@stefanahlman.fi
- www.stefanahlman.fi





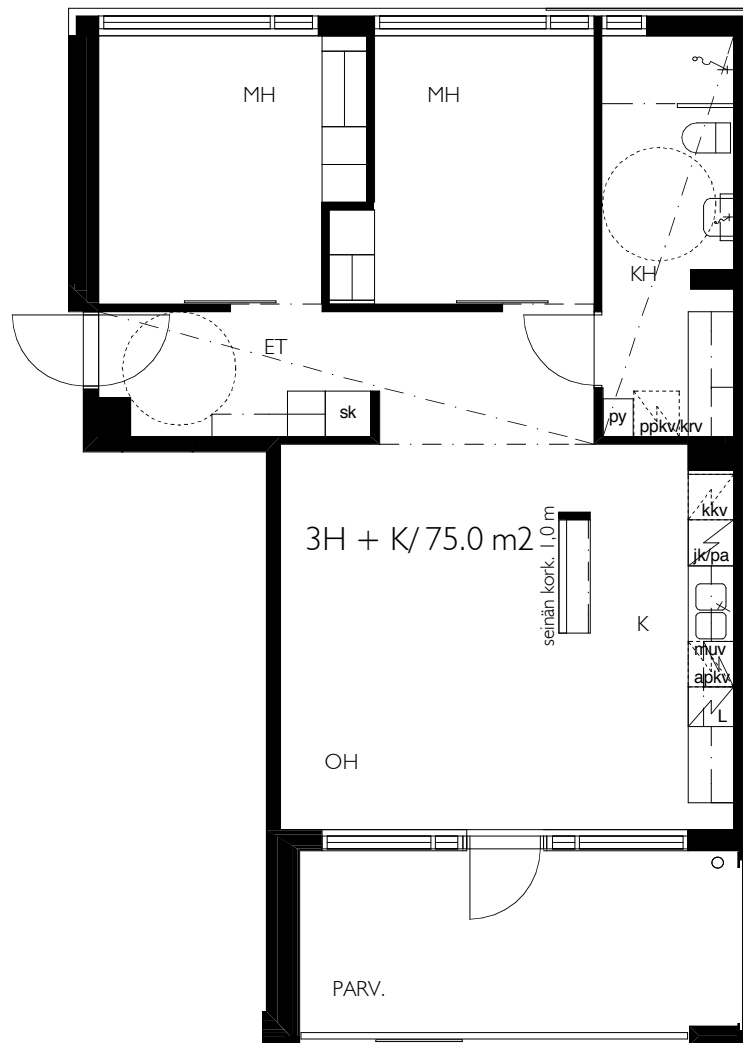
alustava

29.05.2008

# KUMPULAN KIINTEISTÖT OY / MUOTOILIJANPIHA

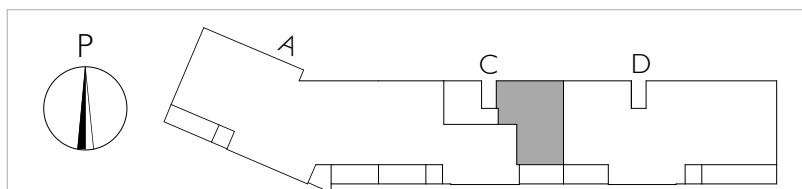
3 H + K, parveke / 75.0 m<sup>2</sup>

asunto: **22**



0 1 2 3 4 5m

- KALEVANKATU 18
- KALEVAGATAN 18
- SISÄPIHA / GÅRDEN
- 00100 HELSINKI
- PUH 020 757 9911
- FAX 020 757 9912
- ark@stefanahlman.fi
- www.stefanahlman.fi





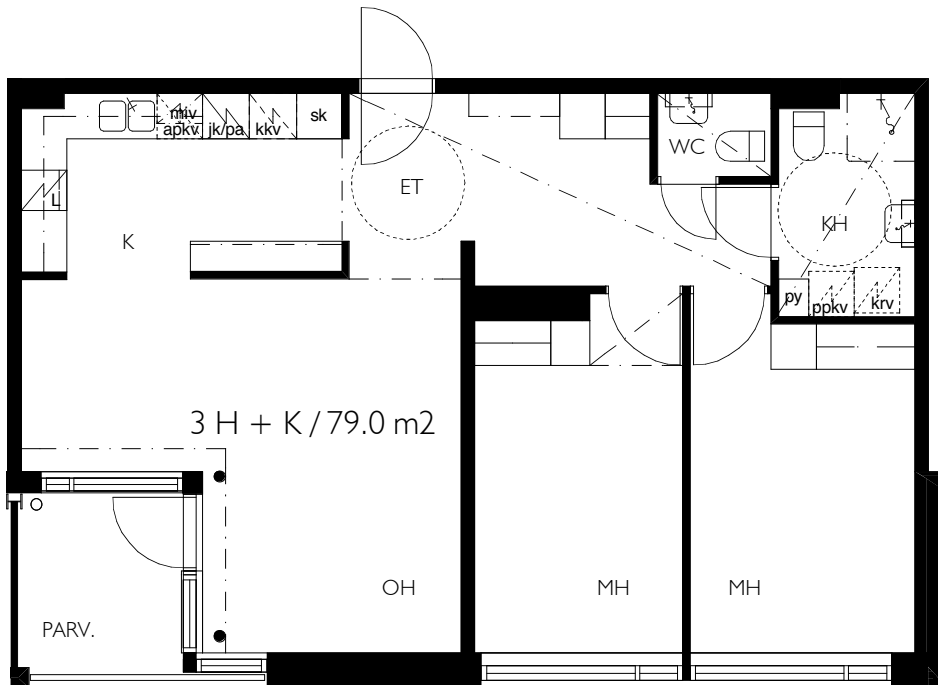
alustava

29.05.2008

# KUMPULAN KIINTEISTÖT OY / MUOTOILIJANPIHA

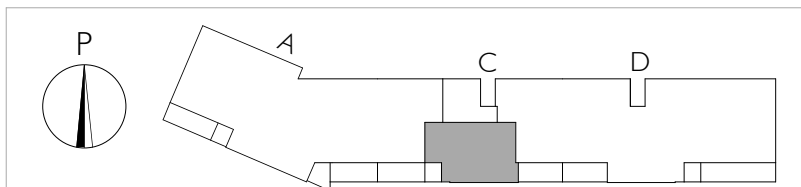
3 H + K, parveke / 79.0 m<sup>2</sup>

asunto: **23, 26, 29, 32**



0 1 2 3 4 5m

- KALEVANKATU 18
- KALEVAGATAN 18
- SISÄPIHA / GÅRDEN
- 00100 HELSINKI
- PUH 020 757 9911
- FAX 020 757 9912
- ark@stefanahlman.fi
- www.stefanahlman.fi





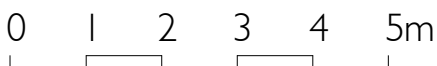
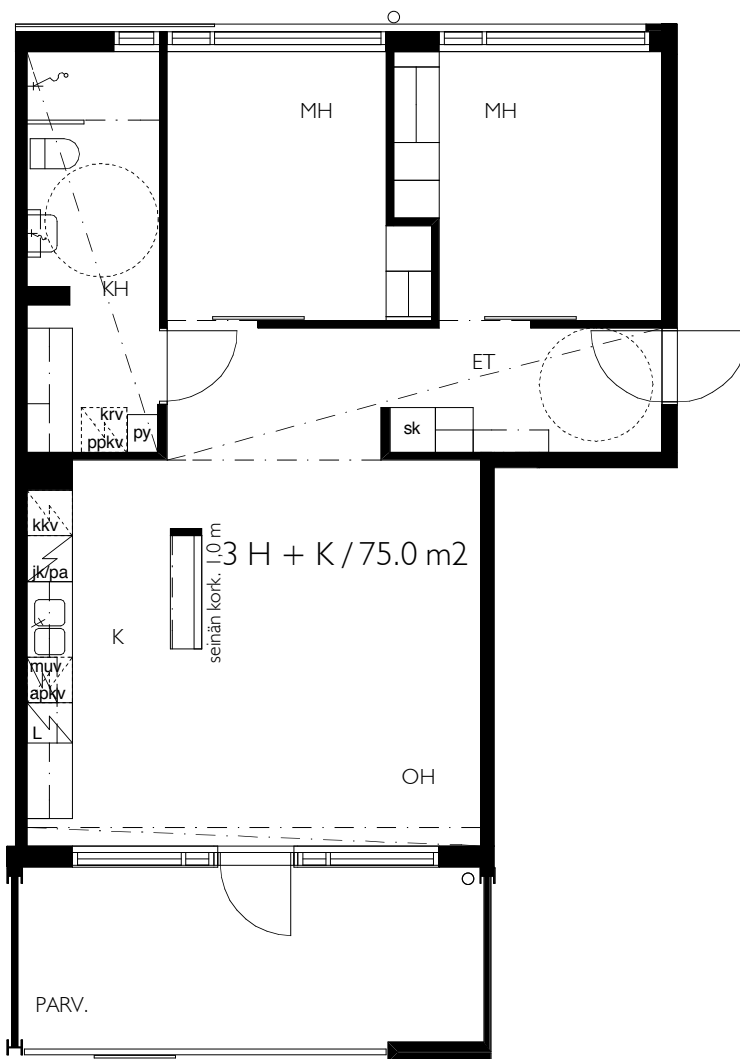
alustava

29.05.2008

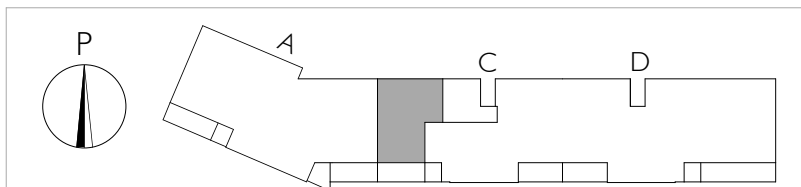
# KUMPULAN KIINTEISTÖT OY / MUOTOILIJANPIIHA

3 H + K, parveke / 75.0 m<sup>2</sup>

asunto: **24,**



- KALEVANKATU 18
- KALEVAGATAN 18
- SISÄPIIHA / GÅRDEN
- 00100 HELSINKI
- PUH 020 757 9911
- FAX 020 757 9912
- ark@stefanahlman.fi
- www.stefanahlman.fi





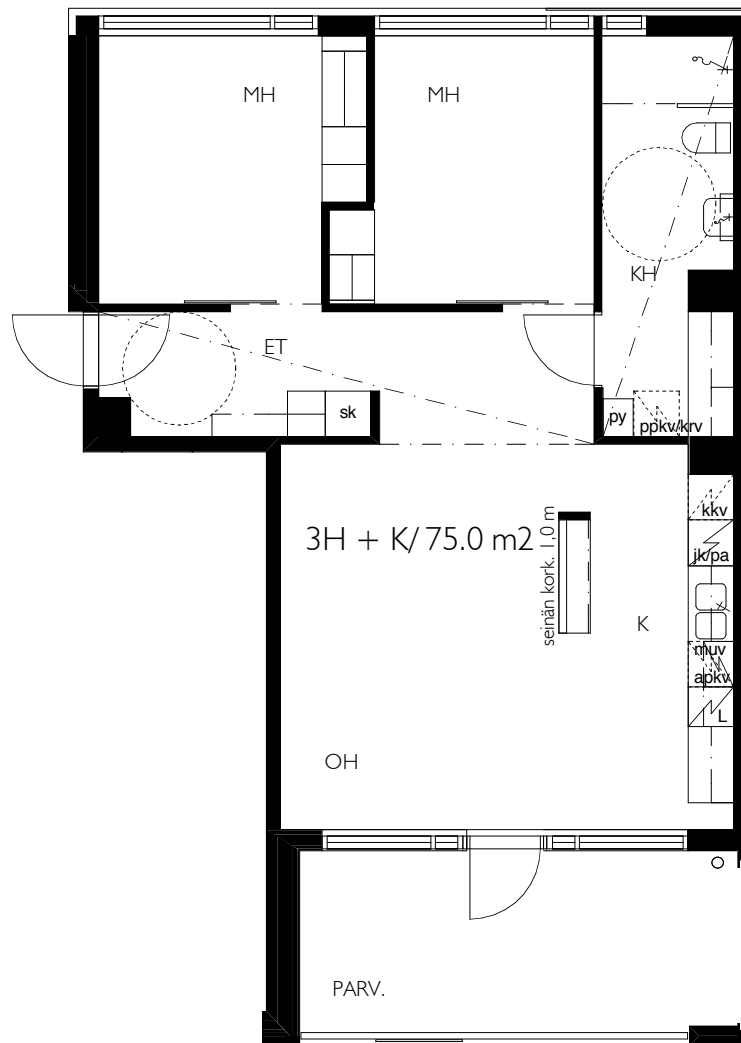
alustava

29.05.2008

# KUMPULAN KIINTEISTÖT OY / MUOTOILIJANPIHA

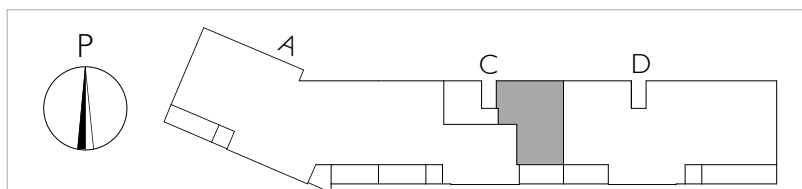
3 H + K, parveke / 75.0 m<sup>2</sup>

asunto: **25, 28**



0 1 2 3 4 5m

- KALEVANKATU 18
- KALEVAGATAN 18
- SISÄPIHA / GÅRDEN
- 00100 HELSINKI
- PUH 020 757 9911
- FAX 020 757 9912
- ark@stefanahlman.fi
- www.stefanahlman.fi







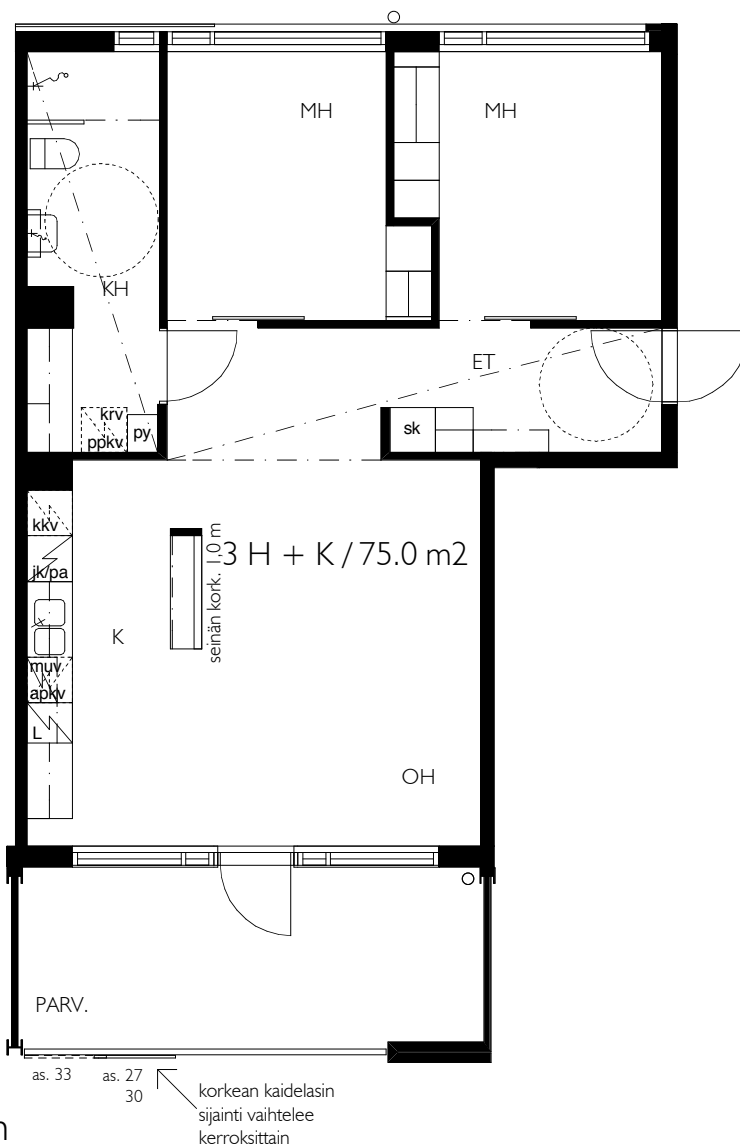
alustava

29.05.2008

# KUMPULAN KIINTEISTÖT OY / MUOTOILIJANPIIHA

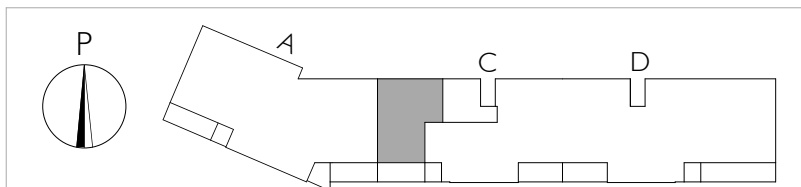
3 H + K, parveke / 75.0 m<sup>2</sup>

asunto: **27, 30, 33**



0 1 2 3 4 5m

- KALEVANKATU 18
- KALEVAGATAN 18
- SISÄPIIHA / GÅRDEN
- 00100 HELSINKI
- PUH 020 757 9911
- FAX 020 757 9912
- ark@stefanahlman.fi
- www.stefanahlman.fi





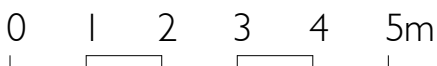
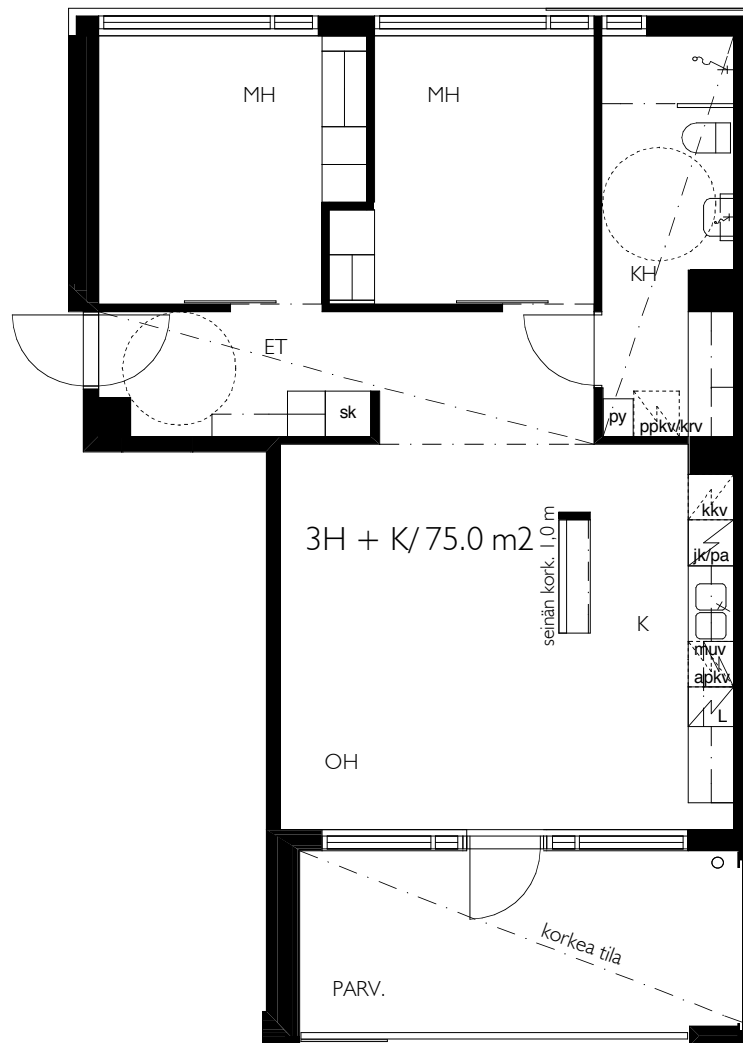
alustava

29.05.2008

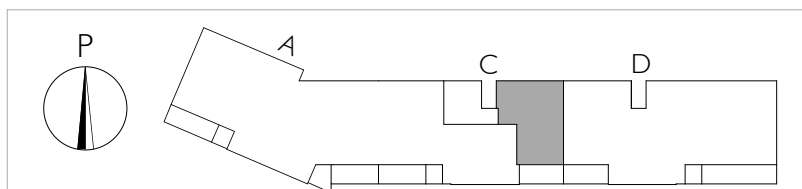
# KUMPULAN KIINTEISTÖT OY / MUOTOILIJANPIIHA

3 H + K, parveke / 75.0 m<sup>2</sup>

asunto: **31**



- KALEVANKATU 18
- KALEVAGATAN 18
- SISÄPIIHA / GÅRDEN
- 00100 HELSINKI
- PUH 020 757 9911
- FAX 020 757 9912
- ark@stefanahlman.fi
- www.stefanahlman.fi





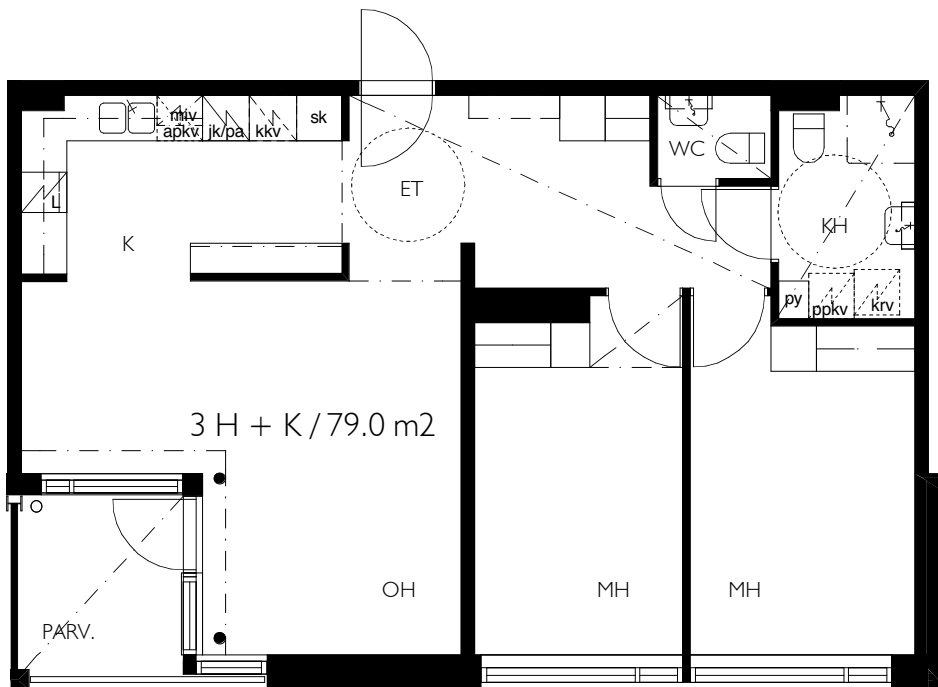
alustava

29.05.2008

# KUMPULAN KIINTEISTÖT OY / MUOTOILIJANPIHA

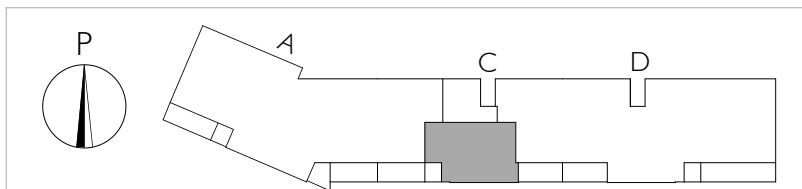
3 H + K, parveke / 79.0 m<sup>2</sup>

asunto: **34**



0 1 2 3 4 5m

- KALEVANKATU 18
- KALEVAGATAN 18
- SISÄPIHA / GÅRDEN
- 00100 HELSINKI
- PUH 020 757 9911
- FAX 020 757 9912
- ark@stefanahlman.fi
- www.stefanahlman.fi





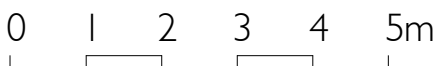
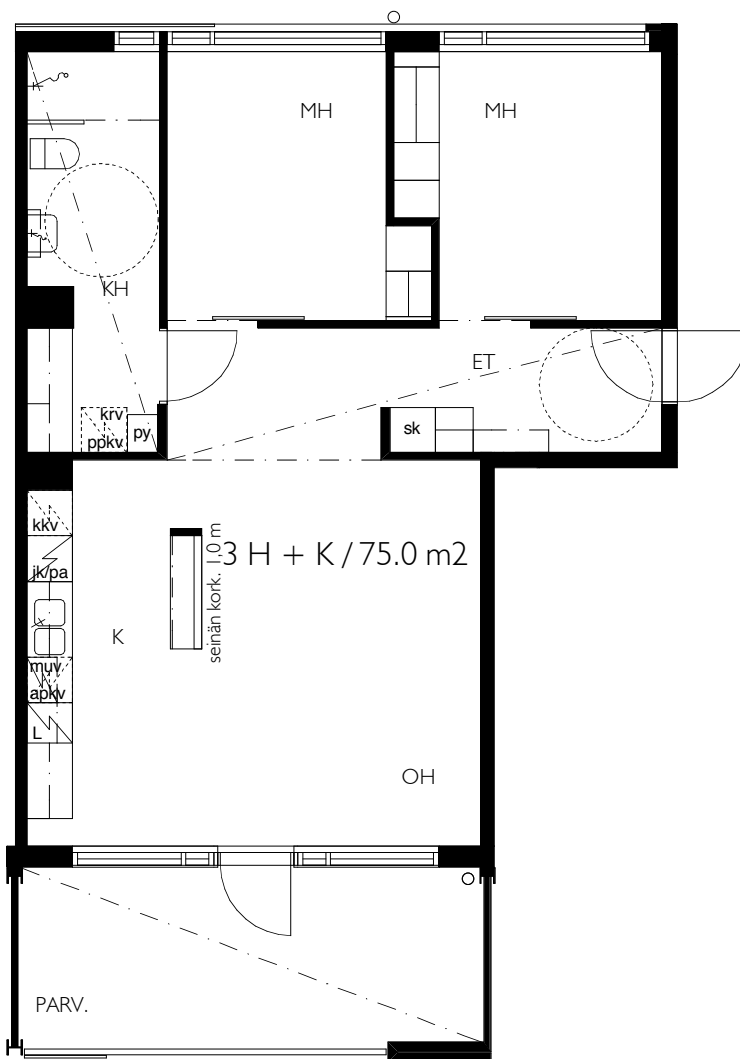
alustava

29.05.2008

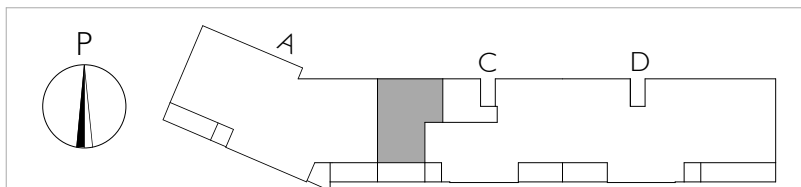
# KUMPULAN KIINTEISTÖT OY / MUOTOILIJANPIIHA

3 H + K, parveke / 75.0 m<sup>2</sup>

asunto: **35**



- KALEVANKATU 18
- KALEVAGATAN 18
- SISÄPIIHA / GÅRDEN
- 00100 HELSINKI
- PUH 020 757 9911
- FAX 020 757 9912
- ark@stefanahlman.fi
- www.stefanahlman.fi





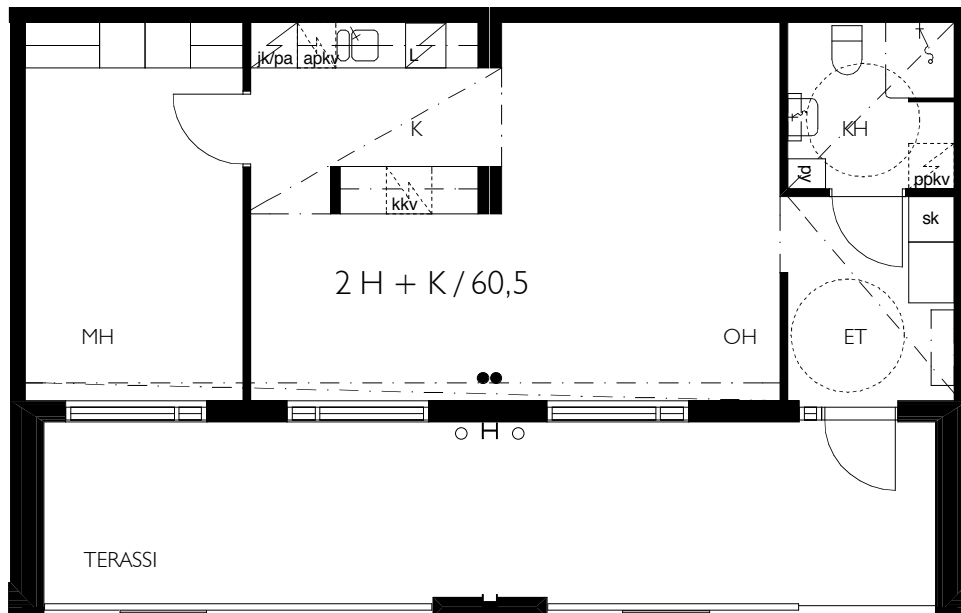
alustava

29.05.2008

# KUMPULAN KIINTEISTÖT OY / MUOTOILIJANPIIHA

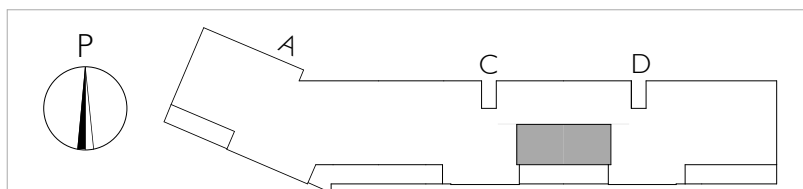
2 H + K, terassi / 60.5 m<sup>2</sup>

asunto: **36**



0 1 2 3 4 5m

- KALEVANKATU 18
- KALEVAGATAN 18
- SISÄPIIHA / GÅRDEN
- 00100 HELSINKI
- PUH 020 757 9911
- FAX 020 757 9912
- ark@stefanahlman.fi
- www.stefanahlman.fi





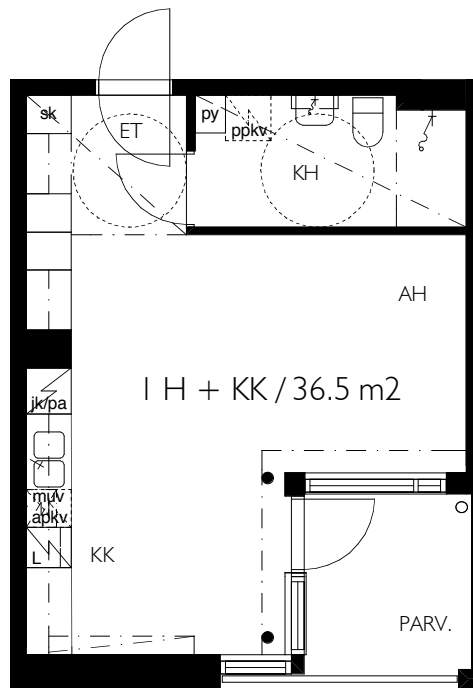
alustava

29.05.2008

# KUMPULAN KIINTEISTÖT OY / MUOTOILIJANPIIHA

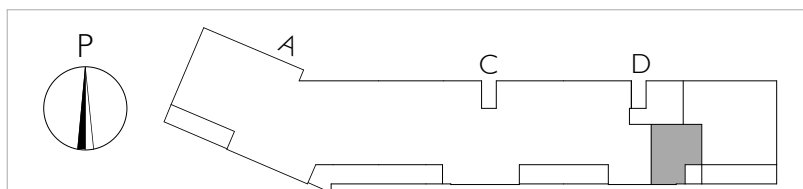
I H + KK, parveke/ 36.5 m<sup>2</sup>

asunto: **37**



0 1 2 3 4 5m

- KALEVANKATU 18
- KALEVAGATAN 18
- SISÄPIIHA / GÅRDEN
- 00100 HELSINKI
- PUH 020 757 9911
- FAX 020 757 9912
- ark@stefanahlman.fi
- www.stefanahlman.fi





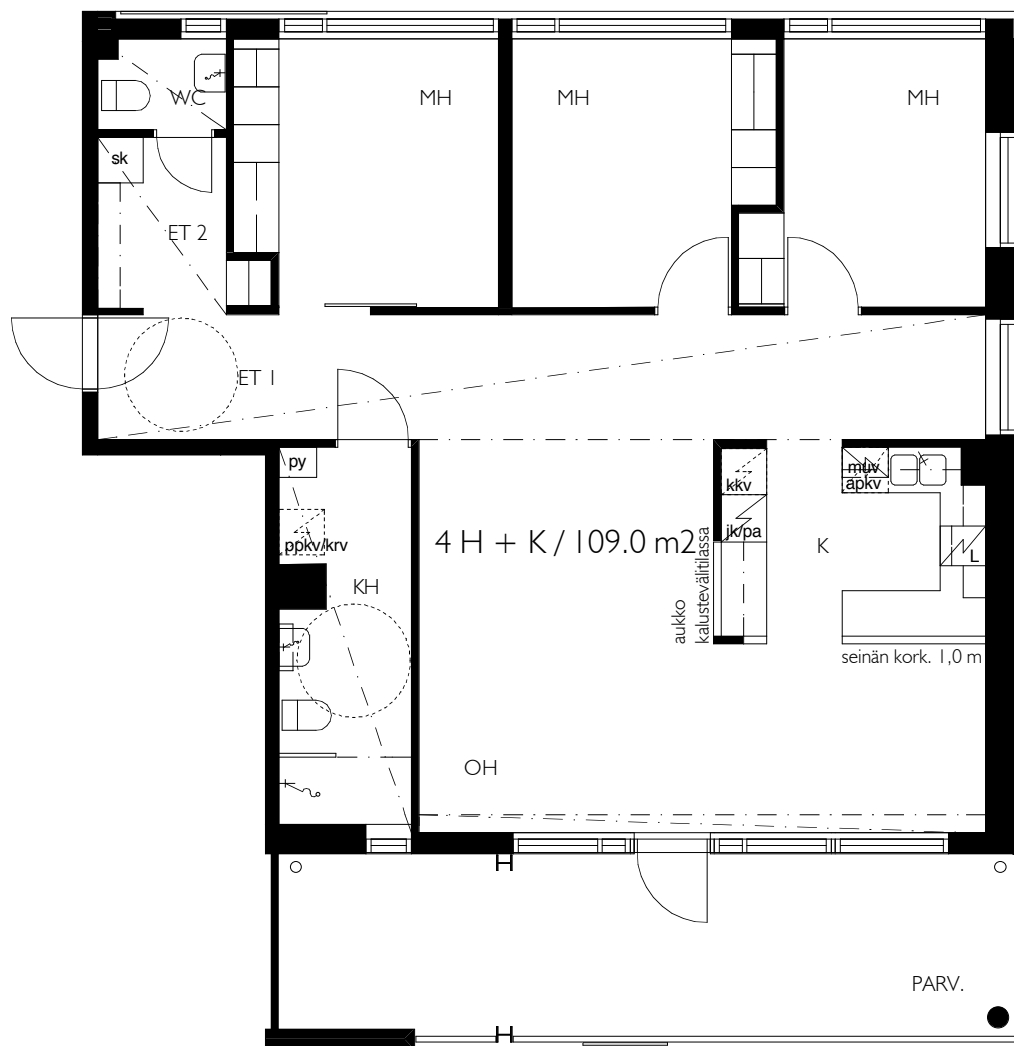
alustava

29.05.2008

# KUMPULAN KIINTEISTÖT OY / MUOTOILIJANPIIHA

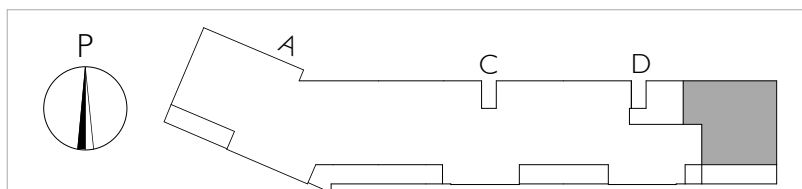
4 H + K, parveke / 109.0 m<sup>2</sup>

asunto: **38**



0 1 2 3 4 5m

- KALEVANKATU 18
- KALEVAGATAN 18
- SISÄPIIHA / GÅRDEN
- 00100 HELSINKI
- PUH 020 757 9911
- FAX 020 757 9912
- ark@stefanahlman.fi
- www.stefanahlman.fi





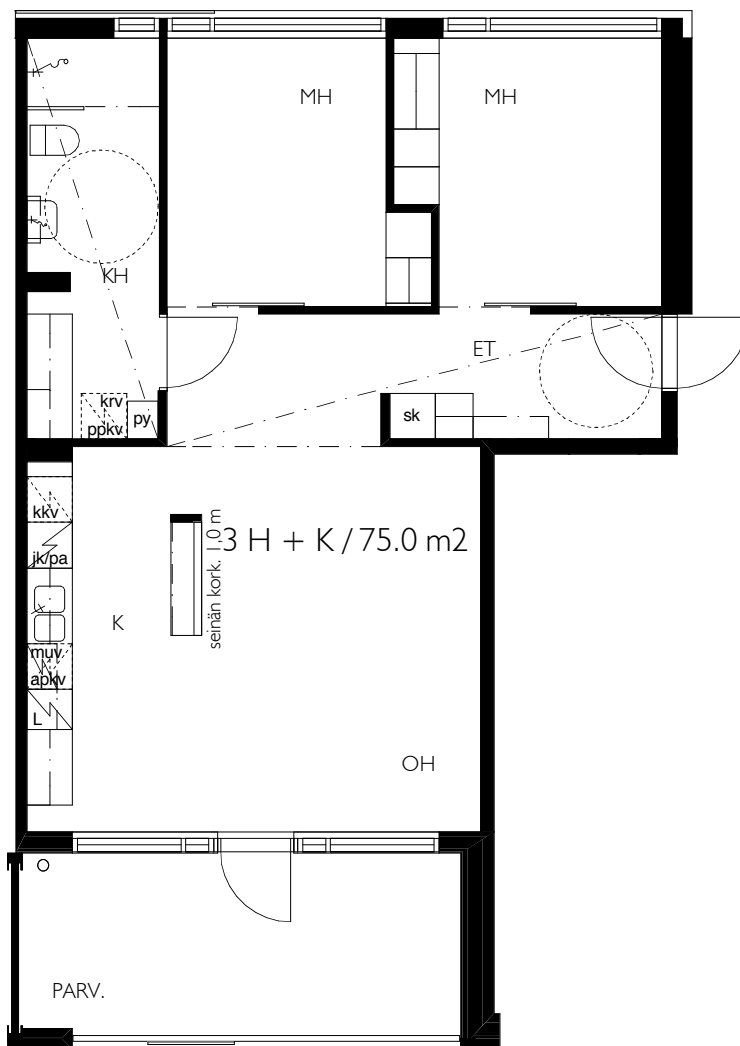
alustava

29.05.2008

# KUMPULAN KIINTEISTÖT OY / MUOTOILIJANPIIHA

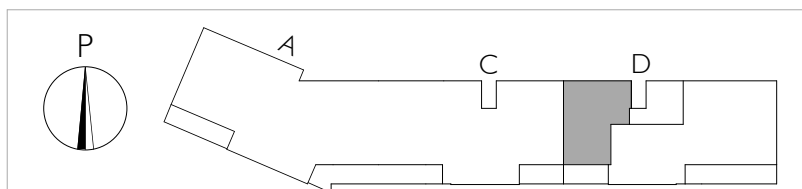
3 H + K, parveke / 75.0 m<sup>2</sup>

asunto: **39**



0 1 2 3 4 5m

- KALEVANKATU 18
- KALEVAGATAN 18
- SISÄPIIHA / GÅRDEN
- 00100 HELSINKI
- PUH 020 757 9911
- FAX 020 757 9912
- ark@stefanahlman.fi
- www.stefanahlman.fi







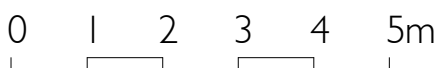
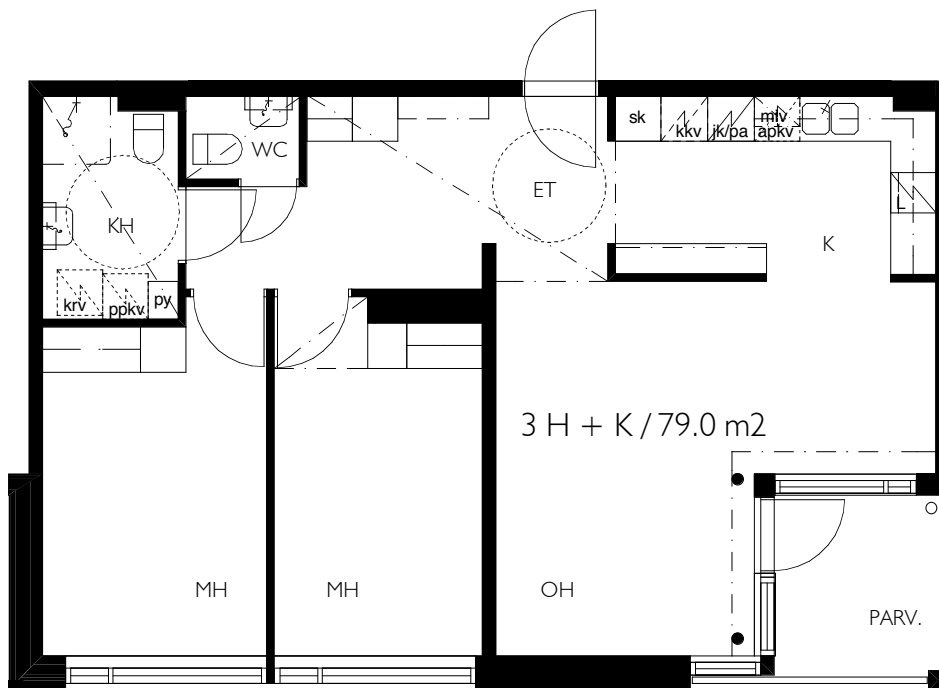
alustava

29.05.2008

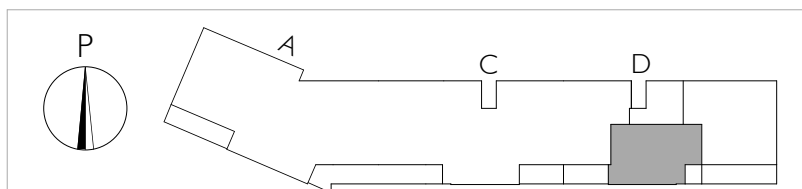
# KUMPULAN KIINTEISTÖT OY / MUOTOILIJANPIHA

3 H + K, parveke / 79.0 m<sup>2</sup>

asunto: **40, 43, 46**



- KALEVANKATU 18
- KALEVAGATAN 18
- SISÄPIHA / GÅRDEN
- 00100 HELSINKI
- PUH 020 757 9911
- FAX 020 757 9912
- ark@stefanahlman.fi
- www.stefanahlman.fi





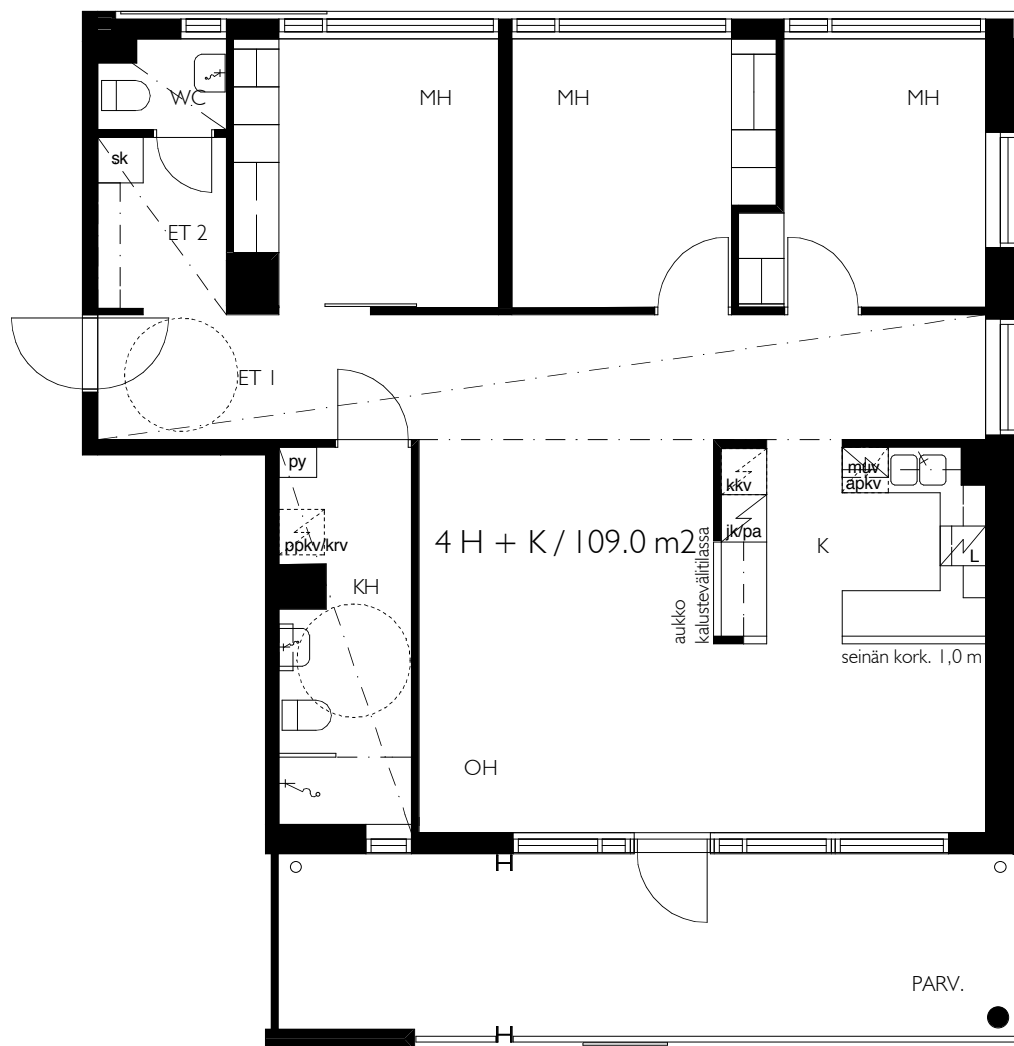
alustava

29.05.2008

# KUMPULAN KIINTEISTÖT OY / MUOTOILIJANPIIHA

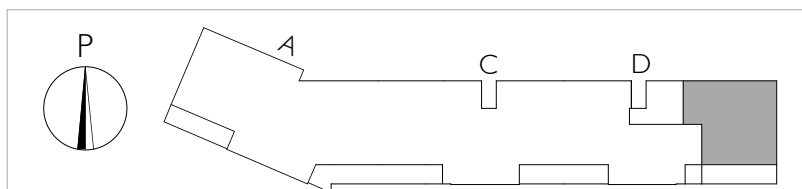
4 H + K, parveke / 109.0 m<sup>2</sup>

asunto: 41, 44, 47



0 1 2 3 4 5m

- KALEVANKATU 18
- KALEVAGATAN 18
- SISÄPIIHA / GÅRDEN
- 00100 HELSINKI
- PUH 020 757 9911
- FAX 020 757 9912
- ark@stefanahlman.fi
- www.stefanahlman.fi





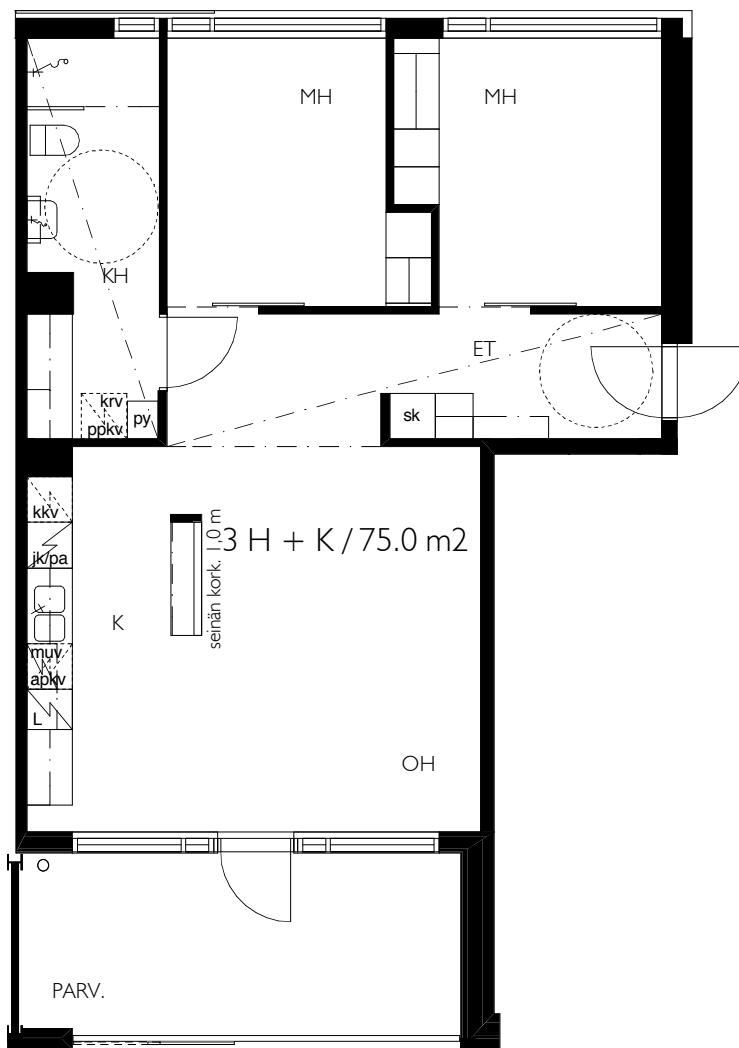
alustava

29.05.2008

# KUMPULAN KIINTEISTÖT OY / MUOTOILIJANPIIHA

3 H + K, parveke / 75.0 m<sup>2</sup>

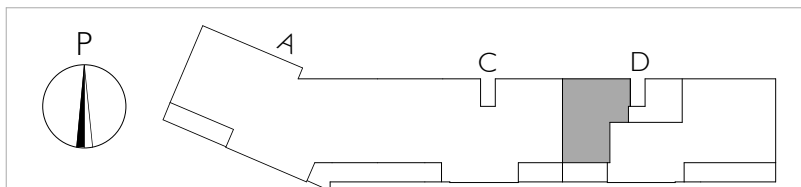
asunto: **42, 45,**



0 1 2 3 4 5m

korkean kaidelasin  
sijainti vaihtelee  
kerroksittain

- KALEVANKATU 18
- KALEVAGATAN 18
- SISÄPIIHA / GÅRDEN
- 00100 HELSINKI
- PUH 020 757 9911
- FAX 020 757 9912
- ark@stefanahlman.fi
- www.stefanahlman.fi





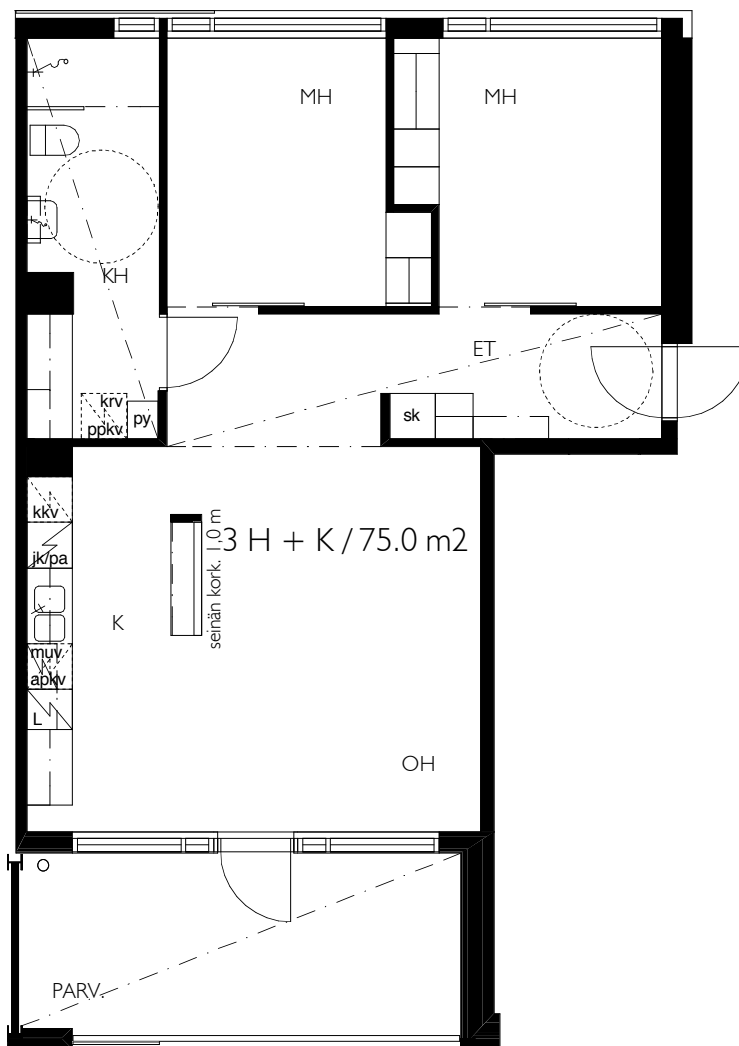
alustava

29.05.2008

# KUMPULAN KIINTEISTÖT OY / MUOTOILIJANPIIHA

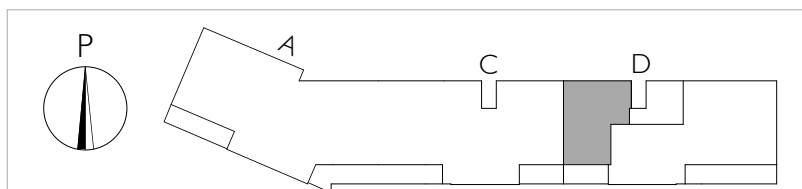
3 H + K, parveke / 75.0 m<sup>2</sup>

asunto: **48**



0 1 2 3 4 5m

- KALEVANKATU 18
- KALEVAGATAN 18
- SISÄPIIHA / GÅRDEN
- 00100 HELSINKI
- PUH 020 757 9911
- FAX 020 757 9912
- ark@stefanahlman.fi
- www.stefanahlman.fi





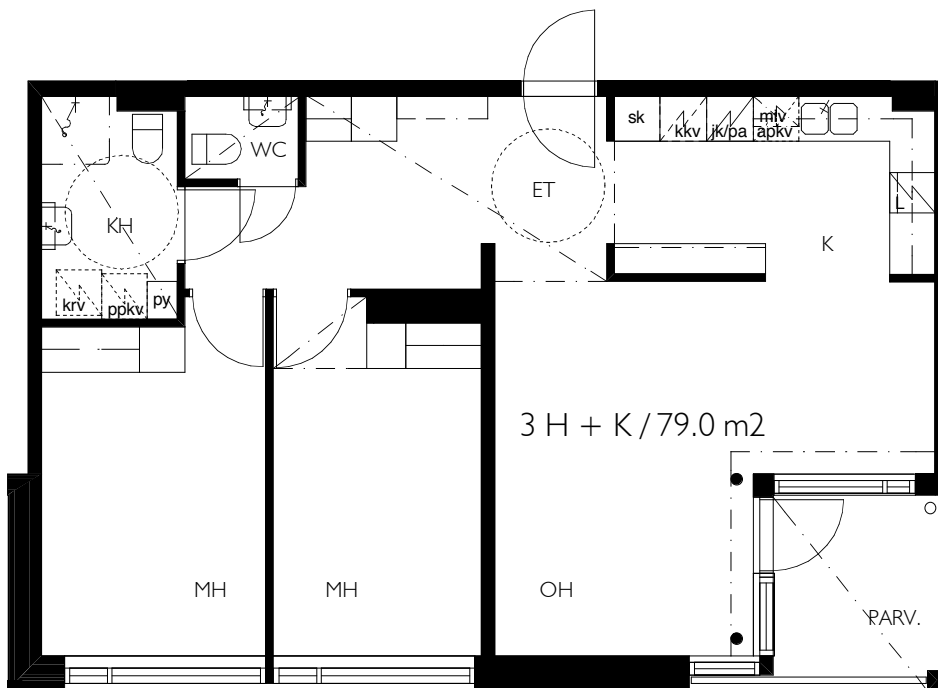
alustava

29.05.2008

# KUMPULAN KIINTEISTÖT OY / MUOTOILIJANPIIHA

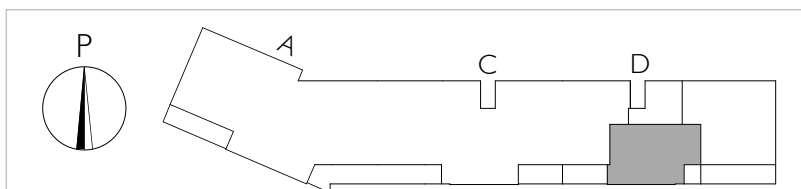
3 H + K, parveke / 79.0 m<sup>2</sup>

asunto: 49



0 1 2 3 4 5m

- KALEVANKATU 18
- KALEVAGATAN 18
- SISÄPIIHA / GÅRDEN
- 00100 HELSINKI
- PUH 020 757 9911
- FAX 020 757 9912
- ark@stefanahlman.fi
- www.stefanahlman.fi





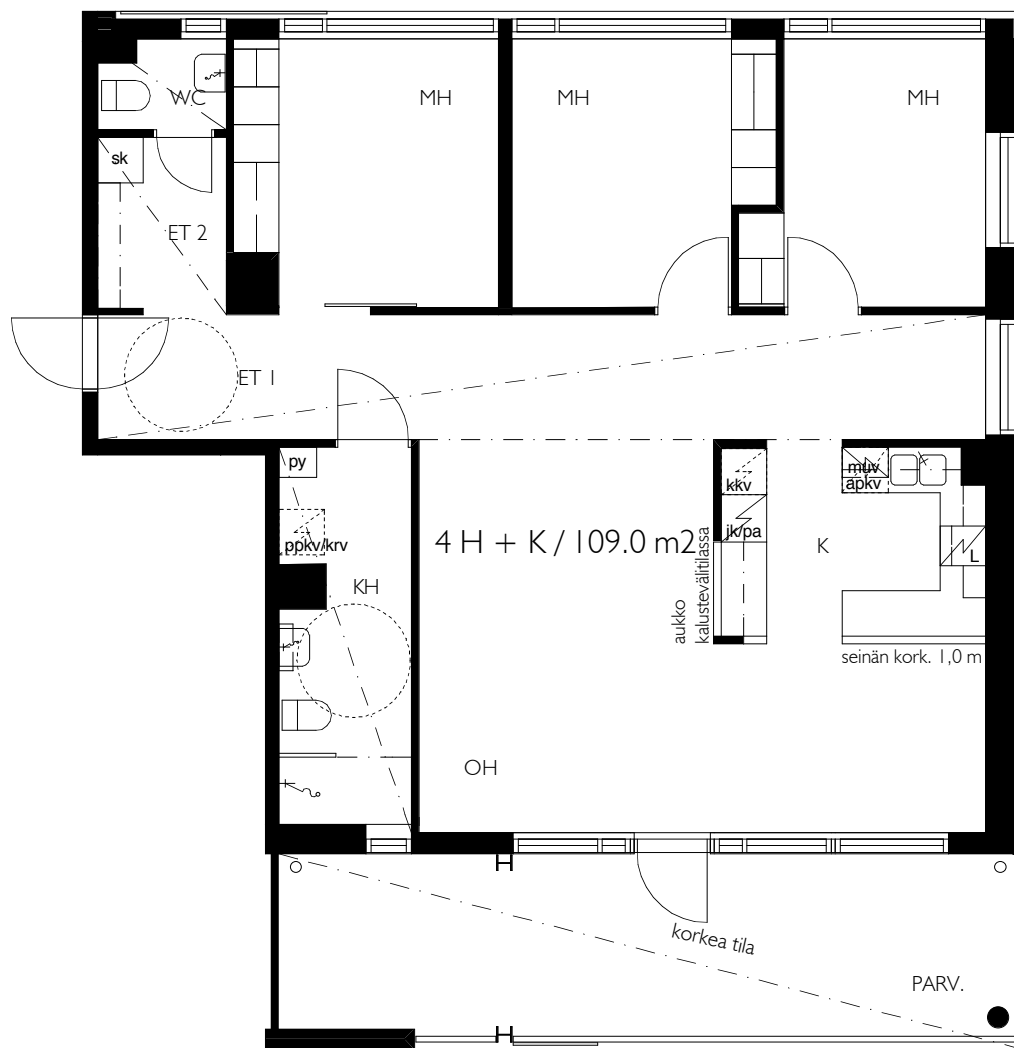
alustava

29.05.2008

# KUMPULAN KIINTEISTÖT OY / MUOTOILIJANPIIHA

4 H + K, parveke / 109.0 m<sup>2</sup>

asunto: **50**



0 1 2 3 4 5m

- KALEVANKATU 18
- KALEVAGATAN 18
- SISÄPIIHA / GÅRDEN
- 00100 HELSINKI
- PUH 020 757 9911
- FAX 020 757 9912
- ark@stefanahlman.fi
- www.stefanahlman.fi

